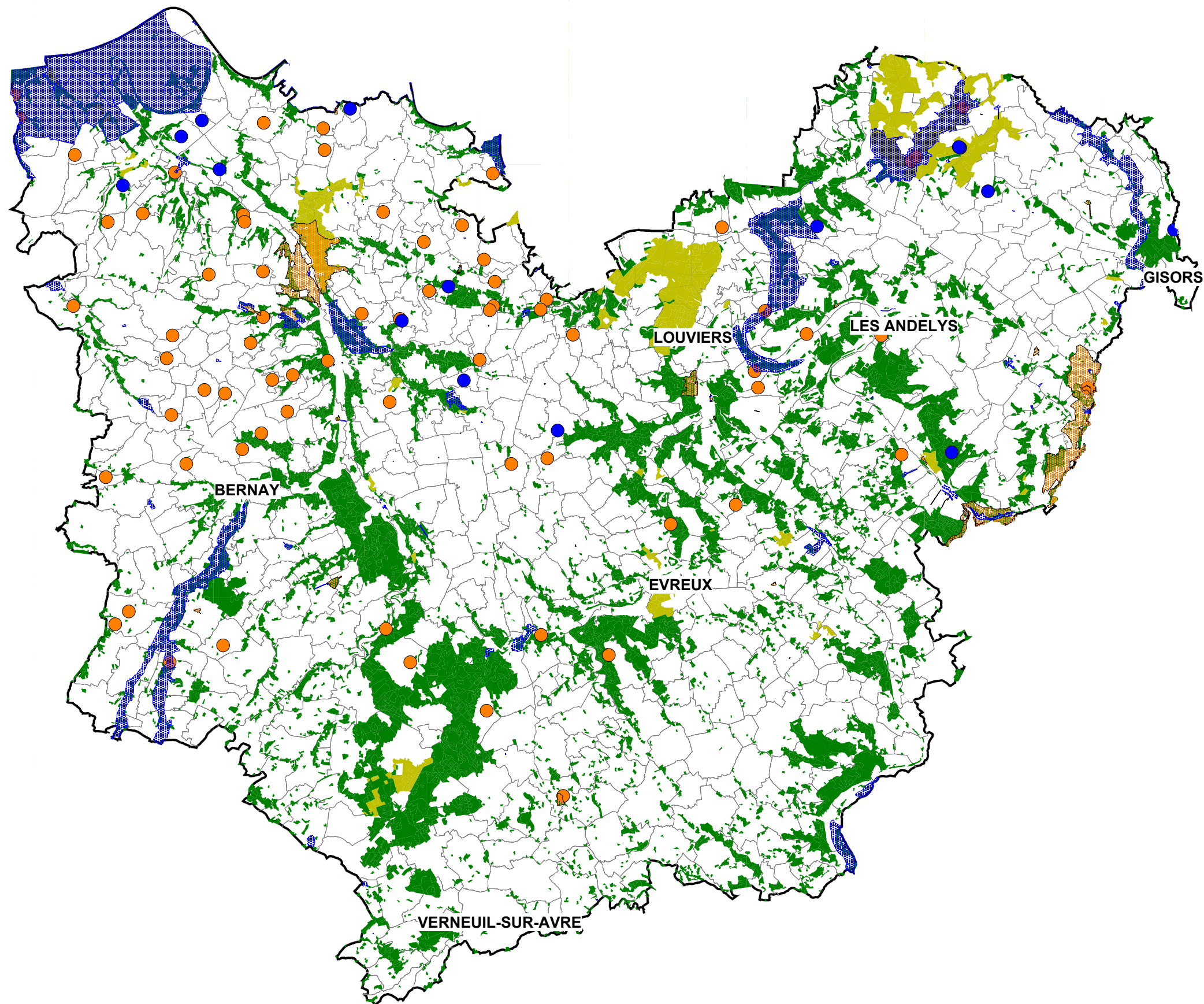


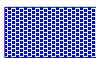

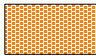





# Documents de Gestion Durable et réglementations environnementales



Couverture forestière  
du département de l'Eure :

-  Forêt soumise
-  Forêts privées non dotées de Documents de Gestion Durable
-  Sites inscrits
- 
-  Sites classés
- 



0 8 16 Km

08/02/2007

Sources : ©IGN® ©IFN®  
©DIREN® ©CRPFN®  
Réalisation : ©CRPFN®